



Double Storey
Cluster Home



35'x75'



4+1 Bedrooms



4 Bathrooms



Club House



Freehold



From RM 503,800

PRIMROSE

A magnificent four bedroom double storey home, perfect for family life and entertaining alike. Extend your living space with an open living area, private

courtyard and balcony off the master suite. The modern cluster design allows each home to own a corner of the world.

***5% discount for Bumiputera on Bumiputera lots**

Visit Our Show Home Today

012 500 8018

kintaproperties.com

Developer : Kinta EcoCity Sdn. Bhd. (58562-M)
No. 2, Jalan Sri Klebang A/12, Bandar Baru Sri Klebang, 31200 Ipoh, Perak . sales@kintaproperties.com

A Premier Development by:

KINTA
PROPERTIES

FLOOR PLAN

SPECIFICATIONS

STRUCTURE: Reinforced concrete frames

WALLS: Clay bricks or equivalent

ROOFING: Concrete roofing tiles on steel trusses

CEILING: Skim coat or plain plaster ceiling or ceiling board

WINDOWS: Anodised aluminium frame casement, sliding, fixed panel and top hung windows

LOCKS: Approved quality locksets

DOORS: Door frame- Metal door frame
 Front entrance- Decorative timber door
 Front & side - Anodised aluminium frame sliding door complete with glass

Bedrooms & bathrooms
 Rear- Timber flush door

WALL FINISHES: Bathrooms- Ceramic tiles up to ceiling height
 Kitchen- Ceramic tiles up to ceiling height
 Others- Cement plastered

FLOOR FINISHES: Ground floor, first floor & staircase- Porcelain and ceramic tiles

Balcony, bathrooms, patio, washing, kitchen, carporch- Porcelain and ceramic tiles

Others- Cement rendered

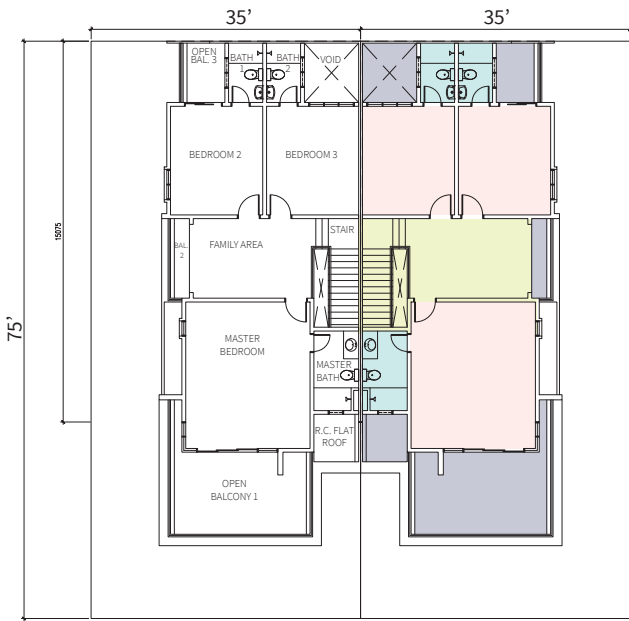
STAIRCASE: M.S. railing

SANITARY FITTINGS: Water storage tank- 1
 Double bowl kitchen sink- 1
 Pedestal water closet- 4
 Wash basin- 4
 Toilet roll holder- 4
 Shower point- 4
 Water tap- 6
 Sink tap- 1

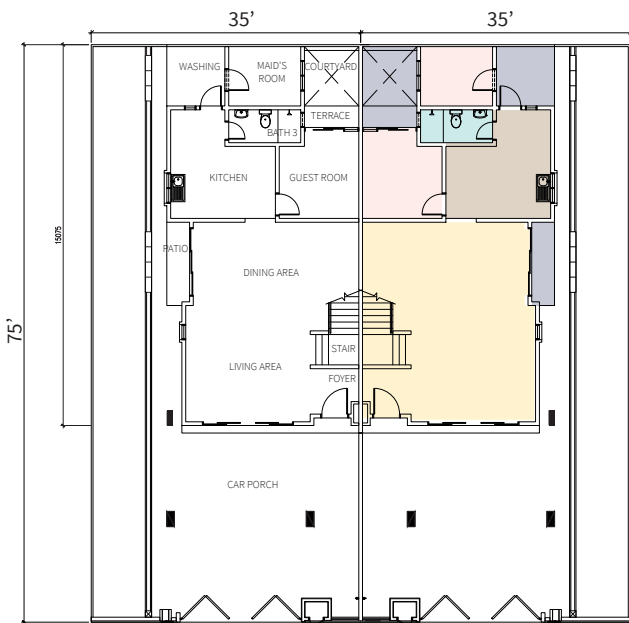
ELECTRICAL INSTALLATION: Lighting point- 30
 Ceiling fan point- 7
 13 amps power point- 17
 Air-cond. point- 5
 Water heater point- 4
 TV point- 3
 Telephone point- 1
 Astro point- 2
 Doorbell- 1
 3-phase wiring

PAINTING: Internal- Emulsion paint or equivalent
 External- Weatherbond paint
 Timber & metal- Gloss paint

GATE & FENCING: Entrance gate- 5'x16' wide m.s. frame folding gate
 Front- 5' high fencing with m.s. grille
 Side- 5' high brickwall fencing



First Floor



Ground Floor

Phase : 5K (Primrose)

Developer Licence: 8456-35/02-2020/0182(L) Licence Validity Period: 15/02/2018-14/02/2020 Advertising Permit: 8456-35/02-2020/0182(P) Permit Validity Period: 15/02/2018-14/02/2020 Exp. Completion Date: May 2020
 Total Units : 64 Land Encumbrances: OCBC Bank (M) Berhad Land Tenure: Freehold Price: Min RM 503,800 Max RM 608,800 Approved Plan No.: LB01/0002291/0004/17/F00/P00/L00 Approving Authority : Majlis Bandaraya Ipoh

IKLAN INI TELAH DILULUSKAN OLEH JABATAN PERUMAHAN NEGARA